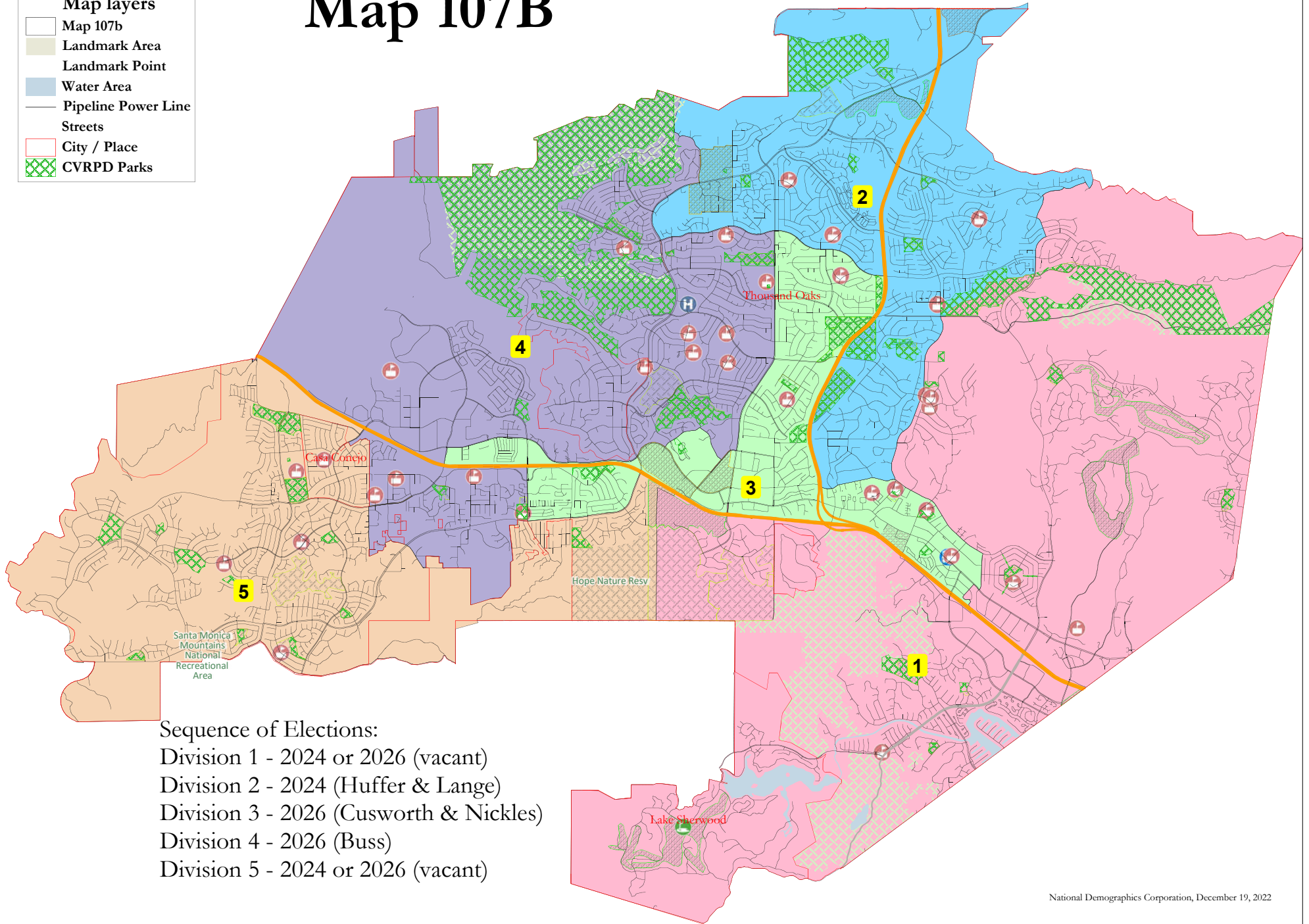


Map 107B

Map layers

- Map 107b
- Landmark Area
- Landmark Point
- Water Area
- Pipeline Power Line
- Streets
- City / Place
- CVRPD Parks



Sequence of Elections:

- Division 1 - 2024 or 2026 (vacant)
- Division 2 - 2024 (Huffer & Lange)
- Division 3 - 2026 (Cusworth & Nickles)
- Division 4 - 2026 (Buss)
- Division 5 - 2024 or 2026 (vacant)

Map 107b

District		1	2	3	4	5	Total
	Total Pop	26,595	27,245	26,194	27,707	27,692	135,433
	Deviation from ideal	-492	158	-893	620	605	1,513
	% Deviation	-1.82%	0.58%	-3.30%	2.29%	2.23%	5.59%
Total Pop	% Hisp	10.6%	17%	42%	16%	14%	20%
	% NH White	73%	65%	43%	66%	68%	63%
	% NH Black	2%	2%	2%	2%	1%	2%
	% Asian-American	12%	13%	10%	12%	13%	12%
Citizen Voting Age Pop	Total	20,724	20,584	16,845	20,889	19,205	98,246
	% Hisp	7%	14%	24%	9%	10%	13%
	% NH White	80%	76%	66%	80%	79%	76%
	% NH Black	2%	1%	2%	2%	2%	2%
	% Asian/Pac.Isl.	10%	8%	7%	9%	8%	8%
Voter Registration (Nov 2020)	Total	20,240	18,583	13,508	19,950	20,034	92,315
	% Latino est.	6%	9%	25%	10%	9%	11%
	% Spanish-Surnamed	6%	9%	23%	9%	9%	10%
	% Asian-Surnamed	6%	6%	3%	6%	6%	5%
	% Filipino-Surnamed	1%	1%	1%	1%	1%	1%
	% NH White est.	86%	83%	71%	82%	83%	82%
	% NH Black	1%	1%	1%	2%	1%	1%
Voter Turnout (Nov 2020)	Total	18,213	16,753	11,410	17,926	18,150	82,452
	% Latino est.	6%	9%	23%	9%	9%	10%
	% Spanish-Surnamed	5%	8%	21%	9%	8%	9%
	% Asian-Surnamed	6%	6%	3%	6%	6%	5%
	% Filipino-Surnamed	1%	1%	1%	1%	1%	1%
	% NH White est.	87%	83%	73%	83%	84%	83%
	% NH Black	1%	1%	1%	2%	1%	1%
Voter Turnout (Nov 2018)	Total	14,070	12,994	7,616	13,869	13,986	62,535
	% Latino est.	5%	8%	19%	7%	8%	8%
	% Spanish-Surnamed	5%	7%	17%	7%	7%	8%
	% Asian-Surnamed	4%	5%	3%	5%	5%	4%
	% Filipino-Surnamed	0%	1%	1%	1%	1%	1%
	% NH White est.	89%	86%	77%	86%	86%	85%
	% NH Black est.	2%	1%	1%	1%	1%	1%
ACS Pop. Est.	Total	26,484	26,820	26,483	28,318	27,635	135,740
Age	age0-19	19%	23%	24%	24%	27%	23%
	age20-60	48%	48%	56%	48%	50%	50%
	age60plus	33%	29%	20%	28%	23%	27%
Immigration	immigrants	16%	14%	24%	15%	15%	17%
	naturalized	71%	69%	42%	61%	57%	58%
Language spoken at home	english	80%	80%	64%	81%	80%	77%
	spanish	5%	10%	28%	9%	8%	12%
	asian-lang	7%	4%	4%	4%	7%	5%
	other lang	8%	5%	4%	5%	5%	5%
Language Fluency	Speaks Eng. "Less than Very Well"	5%	7%	16%	5%	4%	7%
Education (among those age 25+)	hs-grad	37%	43%	51%	46%	45%	44%
	bachelor	35%	31%	23%	29%	29%	29%
	graduatedegree	27%	21%	12%	22%	23%	21%
Child in Household	child-under18	20%	26%	28%	31%	37%	28%
Pct of Pop. Age 16+	employed	59%	57%	64%	54%	65%	60%
Household Income	income 0-25k	8%	8%	20%	13%	6%	11%
	income 25-50k	9%	12%	18%	11%	10%	12%
	income 50-75k	11%	12%	13%	12%	10%	11%
	income 75-200k	42%	45%	38%	45%	43%	42%
	income 200k-plus	31%	23%	11%	20%	32%	23%
Housing Stats	single family	83%	90%	63%	79%	98%	82%
	multi-family	17%	10%	37%	21%	2%	18%
	rented	26%	23%	52%	29%	18%	30%
	owned	74%	77%	48%	71%	82%	70%

Total population data from the 2020 Decennial Census.

Surname-based Voter Registration and Turnout data from the California Statewide Database.

Latino voter registration and turnout data are Spanish-surname counts adjusted using Census Population Department undercount estimates. NH White and NH Black registration and turnout counts estimated by NDC. Citizen Voting Age Pop., Age, Immigration, and other demographics from the 2016-2020 American Community Survey and Special Tabulation 5-year data.